

# Environmental Impact Assessment Report

Appendix B12 Air Quality and Climate

---

**Grangemouth Flood Protection Scheme 2024**  
**Falkirk Council**

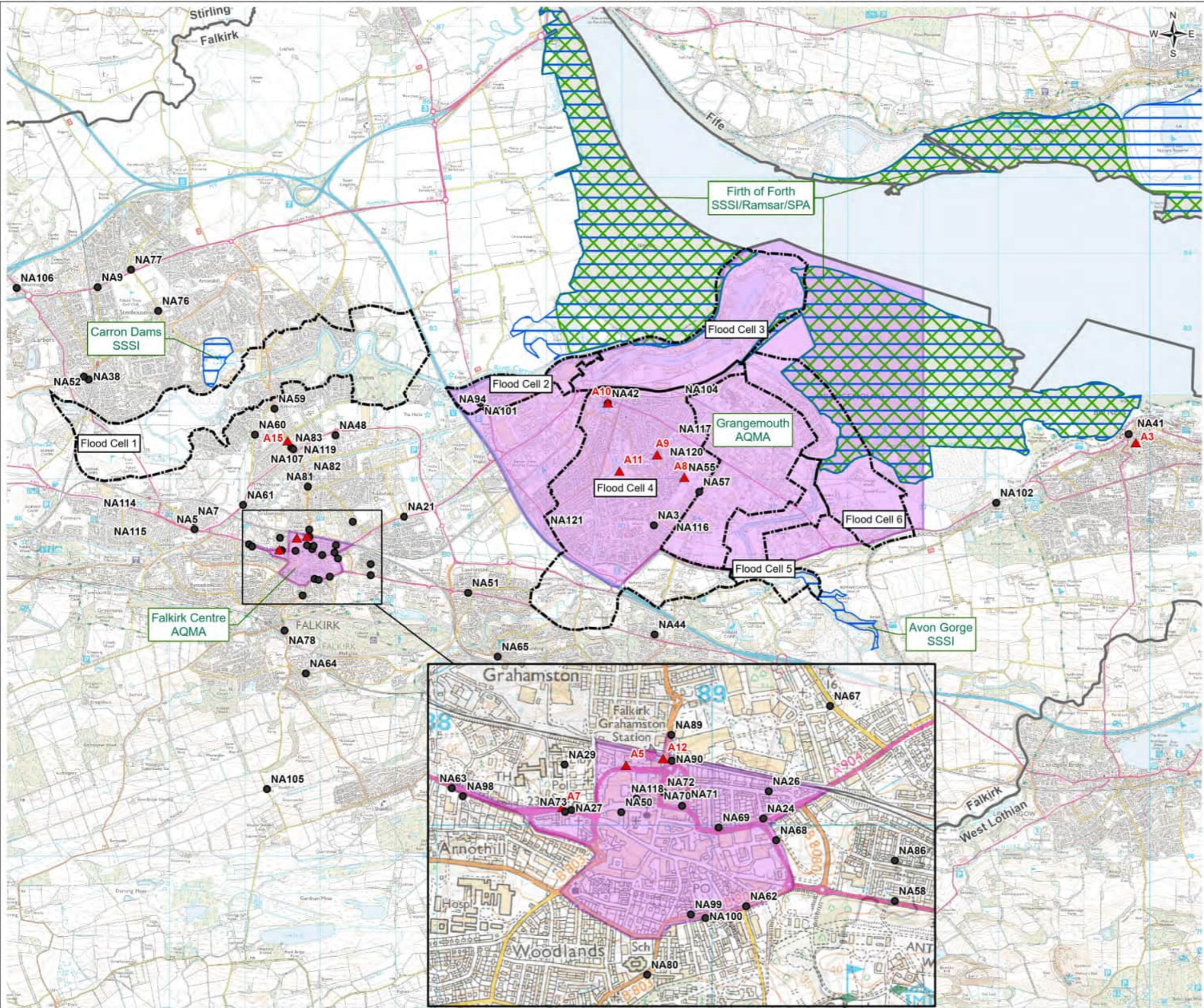


**GRANGEMOUTH**  
Flood Protection Scheme  
Protecting the heart of our communities

## Contents

Figure B12.1 Location of air quality sensitive areas and air quality monitoring locations

FIGURE B12.1



- Legend**
- Falkirk Council NO2 Diffusion Tube Monitoring Locations
  - ▲ Falkirk Council Automatic Monitoring Stations
  - Flood Cell
  - Site of Special Scientific Interest (SSSI)
  - ▨ Firth of Forth Special Protection Area (SPA)/Ramsar
  - ▨ Air Quality Management Area
  - ▭ Administrative Boundaries



PO1	Mar 24	ISSUED FOR PUBLICATION	ON	SB	AB	AMc
Rev	Date	Purpose of revision	Draw	Check'd	Rev'd	Appr'd

**Jacobs**

95 Bothwell Street, Glasgow G2 7HX UK, Postcode, UK  
Tel: +44(0)141 243 8000  
www.jacobs.com

**Client**  
**FALKIRK COUNCIL**  
 The Foundry, 4 Central Park,  
 Central Boulevard, Larbert, FK5 4RU  
 grangemouthps@falkirk.gov.uk

**Project**  
 Grangemouth  
 Flood Protection Scheme

**Drawing Title**  
 LOCATION OF AIR QUALITY SENSITIVE AREAS  
 AND AIR QUALITY MONITORING LOCATIONS  
 SHEET 1 OF 1

**Drawing Status** SB-SUITABLE FOR STATUTORY CONSENT

**Scale @ A3** 1:50,000 **DO NOT SCALE**

**Jacobs No** B2386100

**Client No.**

**Drawing No.** Figure B12.1

© Copyright 2024 CH2M HILL United Kingdom. All rights reserved. The concepts and information contained in this document are the property of CH2M HILL United Kingdom. Use or copying of this document in whole or in part without the written permission of CH2M HILL United Kingdom constitutes an infringement of copyright. CH2M HILL United Kingdom, the Jacobs logo, and all other CH2M HILL United Kingdom trademarks are the property of Jacobs. Limitation: This drawing has been prepared on behalf of, and for the exclusive use of CH2M HILL United Kingdom's Client, and is subject to, and issued in accordance with, the provisions of the contract between CH2M HILL United Kingdom and the Client. CH2M HILL United Kingdom accepts no liability or responsibility whatsoever for, or in respect of, any use of, or reliance upon, this drawing by any third party.

